

Summary of 2010 Pollock Assessment

Liz Brooks
NEFSC – Woods Hole

Outline

- Summarized Results
- Why the difference
- Uncertainties

Where we are



	AIM GARM1	AIM GARM2	AIM GARM3	AIM 2010 Update	ASAP 2010 Base
MSY	17.6k mt	17.6k mt	11.3k mt	11.3k mt	16.2k mt
SSBmsy	3 kg/tow	3 kg/tow	2 kg/tow	2 kg/tow	91k mt
current SSB	1.6 kg/tow	1.99 kt/tow	0.754 kg/tow	0.57 kg/tow	196k mt
Fmsy	5.88*	5.88*	5.66*	5.66*	0.25
current F	3.55*	3.51*	10.97*	13.59*	0.07



Where we were

Where we are



	AIM GARM1	AIM GARM2	AIM GARM3	AIM 2010 Update	ASAP 2010 Base
MSY	17.6k mt	17.6k mt	11.3k mt	11.3k mt	16.2k mt
SSBmsy	3 kg/tow	3 kg/tow	2 kg/tow	2 kg/tow	91k mt
current SSB	1.6 kg/tow	1.99 kt/tow	0.754 kg/tow	0.57 kg/tow	196k mt
Fmsy	5.88*	5.88*	5.66*	5.66*	0.25
current F	3.55*	3.51*	10.97*	13.59*	0.07



Where we were

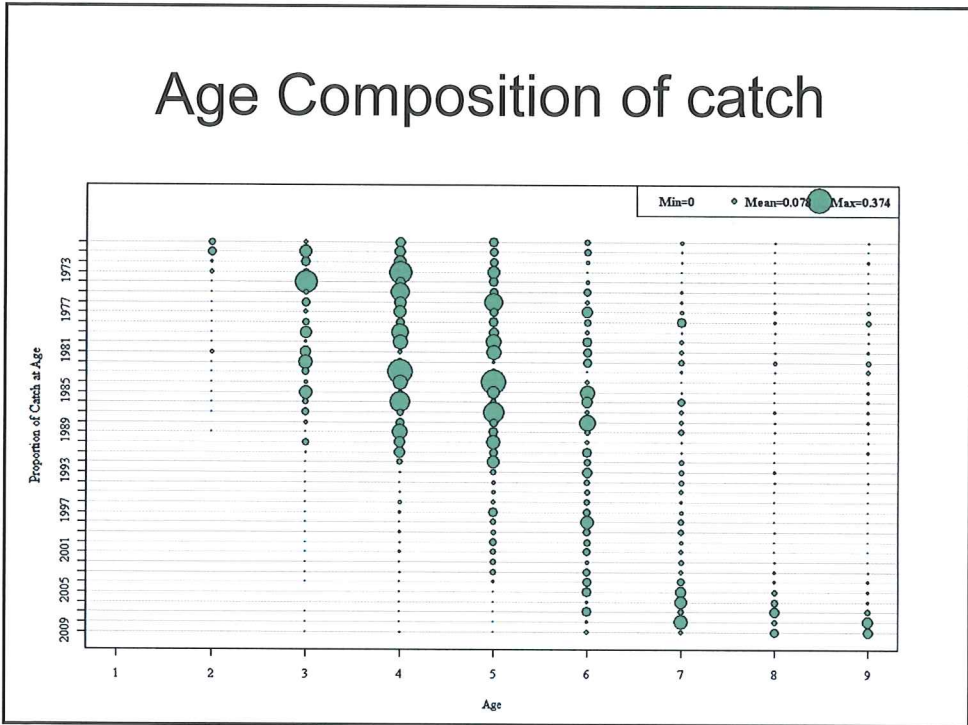
ASAP Base Model

- Not overfished: $SSB_{2009} = 2.15 \times SSB_{MSY}$
- No overfishing: $F_{5-7(2009)} = 0.28 \times F_{MSY}$

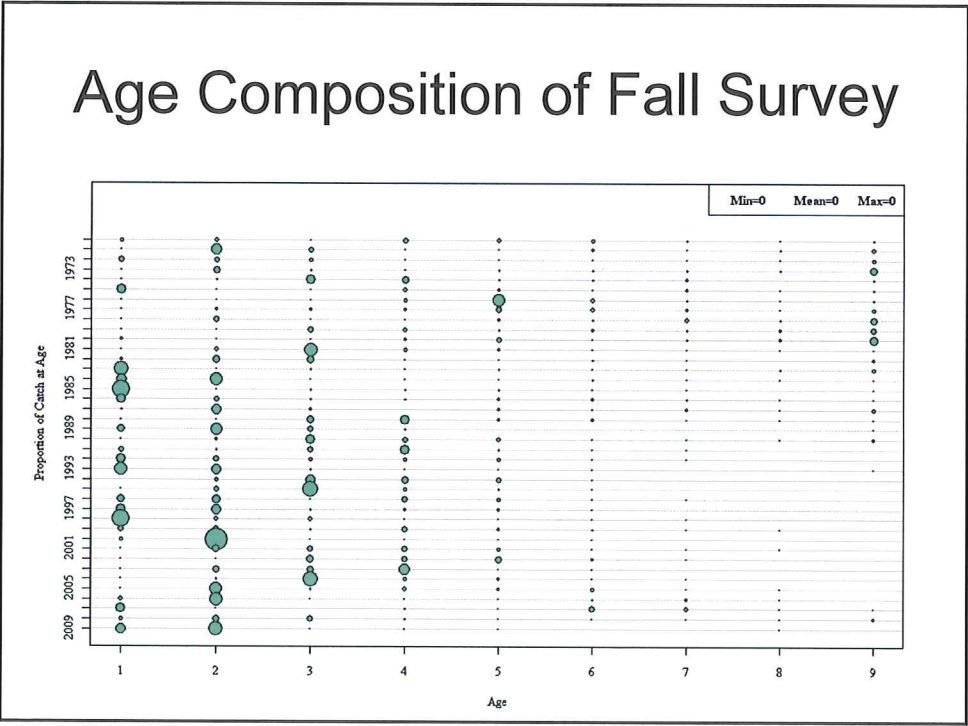
Why the difference

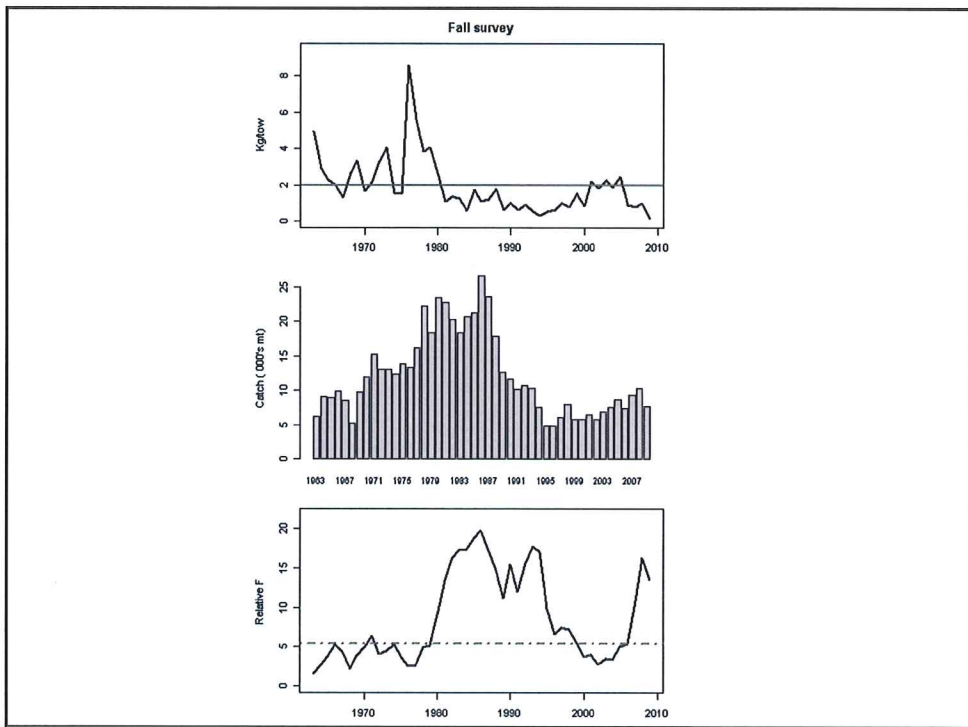
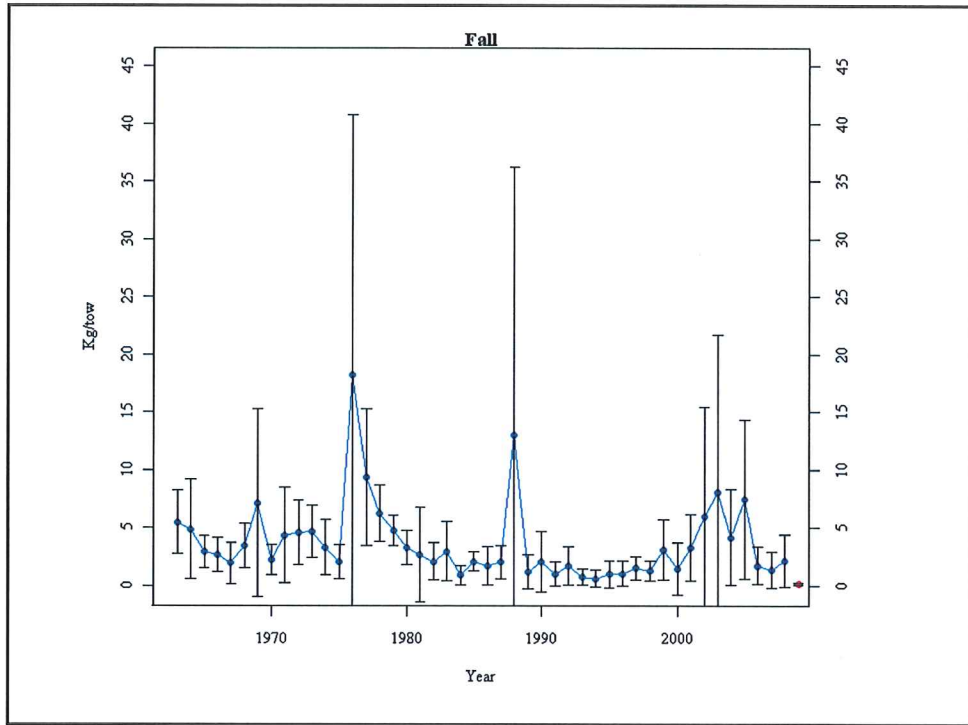
- AIM inputs:
 - NEFSC Fall Index
 - Commercial Landings
 - Recreational Catch
- AIM assumptions:
 - Index and Fishery have same selectivity

Age Composition of catch



Age Composition of Fall Survey

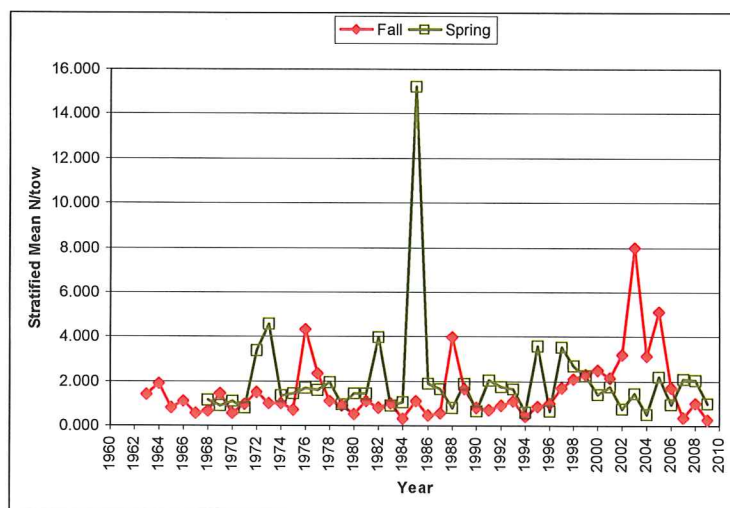




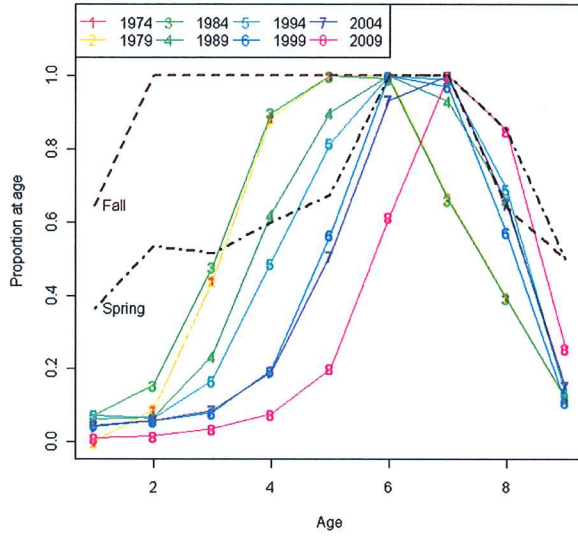
Why the difference

- ASAP inputs:
 - NEFSC Fall & Spring Index
 - Commercial Landings & Discards
 - Recreational Catch
 - Maturity, M, and weight at age
 - Annual CV for each index point
 - Stock-recruit relationship
 - Fleet-specific selectivity at age
- ASAP assumptions:
 - Blocks of years with constant selectivity (Fleets)
 - Index selectivity for ages 9+ = 0.5

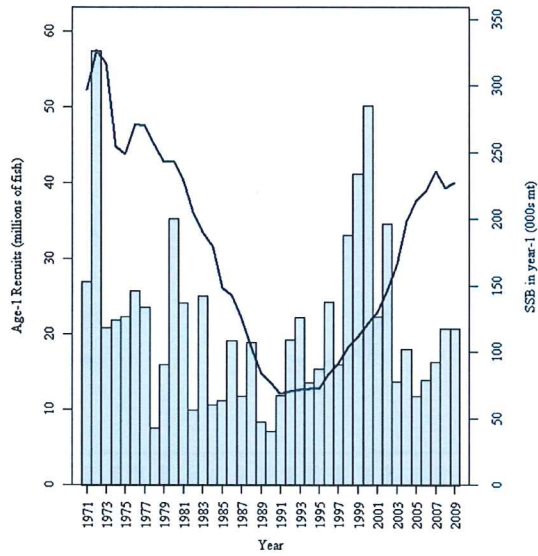
Why the difference



Fishery selectivity vs. Indices



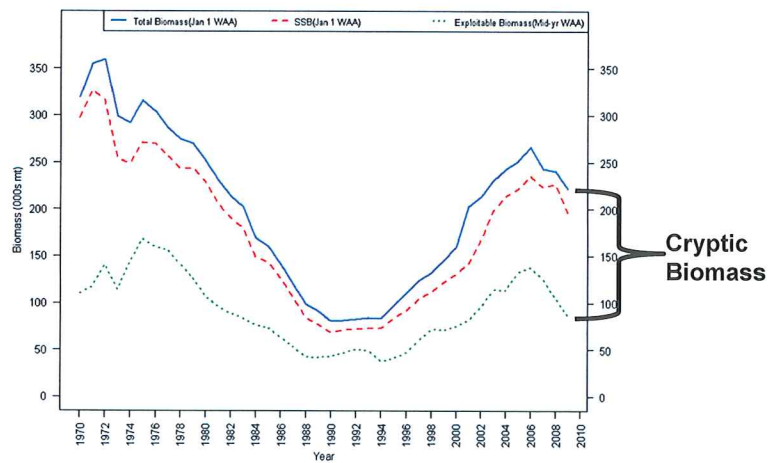
SSB and Recruits (Age 1)



Uncertainties

- Selectivity of NEFSC indices (dome)
- Selectivity of fishery (dome)

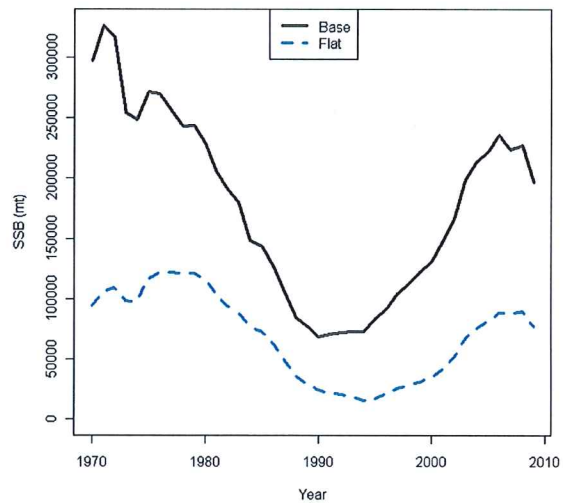
Uncertainty



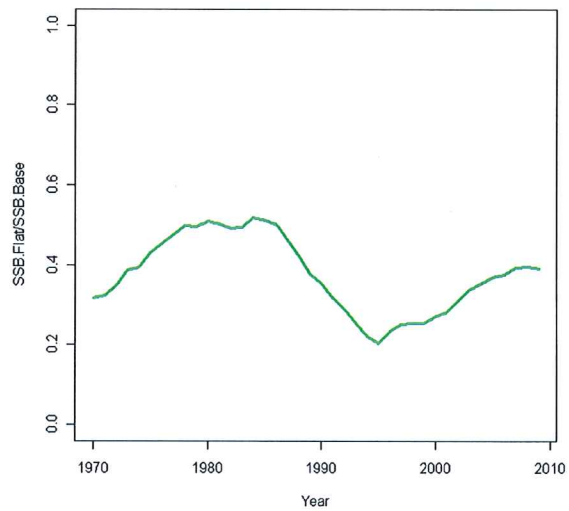
Uncertainty

	BASE	Flat Survey
F40%(5-7)	0.25	0.22
SSBmsy	91k mt	58k mt
MSY	16.2k mt	11.2k mt

Uncertainty



Uncertainty



Uncertainties

- Selectivity of NEFSC indices (dome)
- Selectivity of fishery (dome)
- Stock structure/Migration?/Landings pre-1985

Uncertainty

	BASE	Flat Survey	Dbl. CV Lands	Halve 5Zc Lands
F40%(5-7)	0.25	0.22	0.25	0.25
SSBmsy	91k mt	58k mt	86k mt	81k mt
MSY	16.2k mt	11.2k mt	15.5k mt	14.5k mt

